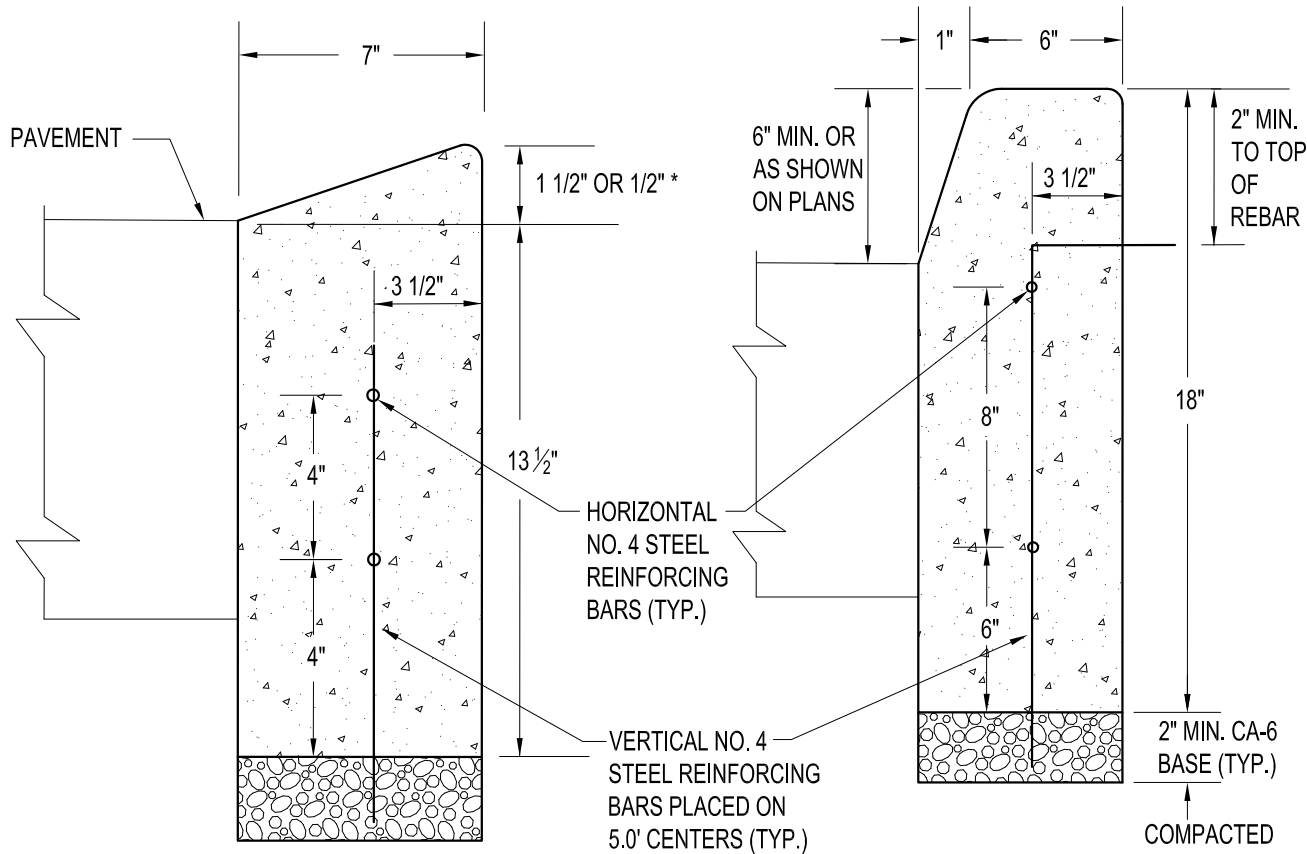


DEPRESSED CURB

BARRIER CURB



NOTES:

1. CONTRACTION JOINTS AND EXPANSION JOINTS SHALL BE INSTALLED IN THE CURB OR CURB AND GUTTER IN PROLONGATION WITH JOINTS IN ADJACENT P.C.C. PAVEMENT OR BASE COURSE.
2. WHEN CURB AND GUTTER IS CONSTRUCTED ADJACENT TO FLEXIBLE PAVEMENT, A 1" THICK PREFORMED EXPANSION JOINT FILLER, CONFORMING TO THE CROSS SECTION OF THE CURB AND GUTTER, SHALL BE INSTALLED AT POINTS OF CURVATURE FOR SHORT-RADIUS CURVES AND CONTRACTION JOINTS SHALL BE PLACED BETWEEN EXPANSION JOINTS AT DISTANCES NOT TO EXCEED 15 FEET.
3. ALL EXPANSION JOINTS SHALL BE INSTALLED WITH A NO. 4 OR 5 BAR x 18" COATED SMOOTH DOWEL BAR. THE DOWEL BAR SHALL BE FITTED WITH A CAP HAVING A PINCHED STOP THAT WILL PROVIDE 1" OF EXPANSION.
4. ALL CONSTRUCTION JOINTS SHALL BE PROVIDED WITH 1/2" DIAMETER BAR CONFORMING TO AASHTO M-31 OR M-53. TIE BARS SHALL BE PLACED ON 9" CENTERS (MINIMUM 2 PER JOINT).
5. TRANSITIONS- THE TRANSITIONS FROM FULL HEIGHT CURB TO DEPRESSED CURB SHALL BE MADE AT THE RATE OF 3" PER FOOT OF LENGTH OR FLATTER.
6. EXPANSION JOINTS SHALL BE PLACED AT INTERVALS NOT TO EXCEED 100 FEET.

BARS TO BE SET AND TIED PRIOR TO CONCRETE POUR.
BAR PLACEMENT DURING POUR WILL NOT BE PERMITTED.

* ADJACENT TO CURB RAMP ACCESSIBLE TO THE DISABLED

Revised:
1. 06/12/2015
2. 08/21/2018
3.
4.

Drawing Name
CURB: CONCRETE CURB TYPE B

Drawing Number
RD-05b
Date: 01/15/2015
Drawn Checked
DD AW

