

North Shore Stormwater/Wetland Improvement Project



CITY OF
Crystal Lake
ILLINOIS

Stormwater Solutions
May 13, 2019

Stormwater Solutions & Stakeholder Engagement

Agenda

- Overview of Project (review for some)
- Update on Project Status & Tentative Schedule
- Break out into groups by Street (East End, Greenfield, Crystal Beach) to discuss sump pump/yard connection locations



Stormwater Solutions & Stakeholder Engagement

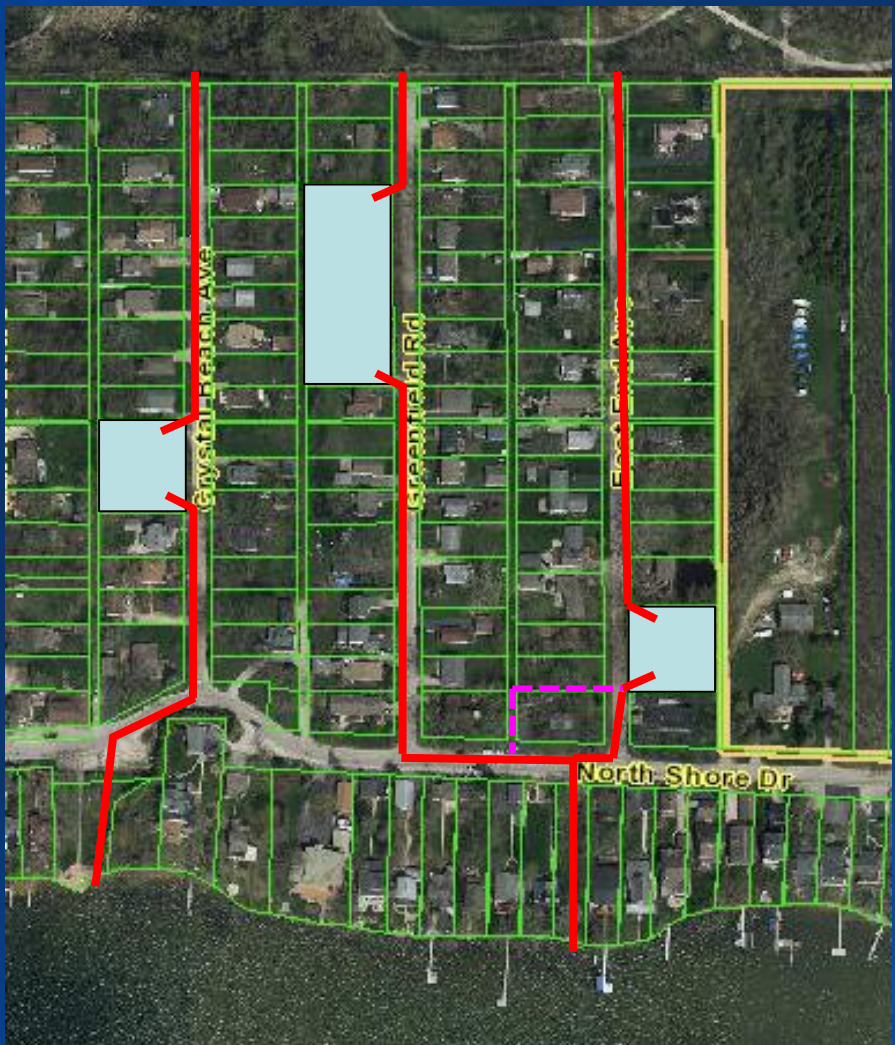
Project Scope

- Trunk line storm sewers and detention/BMP basins on East End, Greenfield and Crystal Beach
- Basins will fill during heavy rain events and drain down afterwards.
- System will replace existing private storm sewer and existing outlets to the Lake.
- Allows for private connections (yard drains and/or sump pumps).



Stormwater Solutions & Stakeholder Engagement

Proposed Storm Sewer & Detention Project



CITY OF
Crystal Lake
ILLINOIS

Stormwater Solutions & Stakeholder Engagement

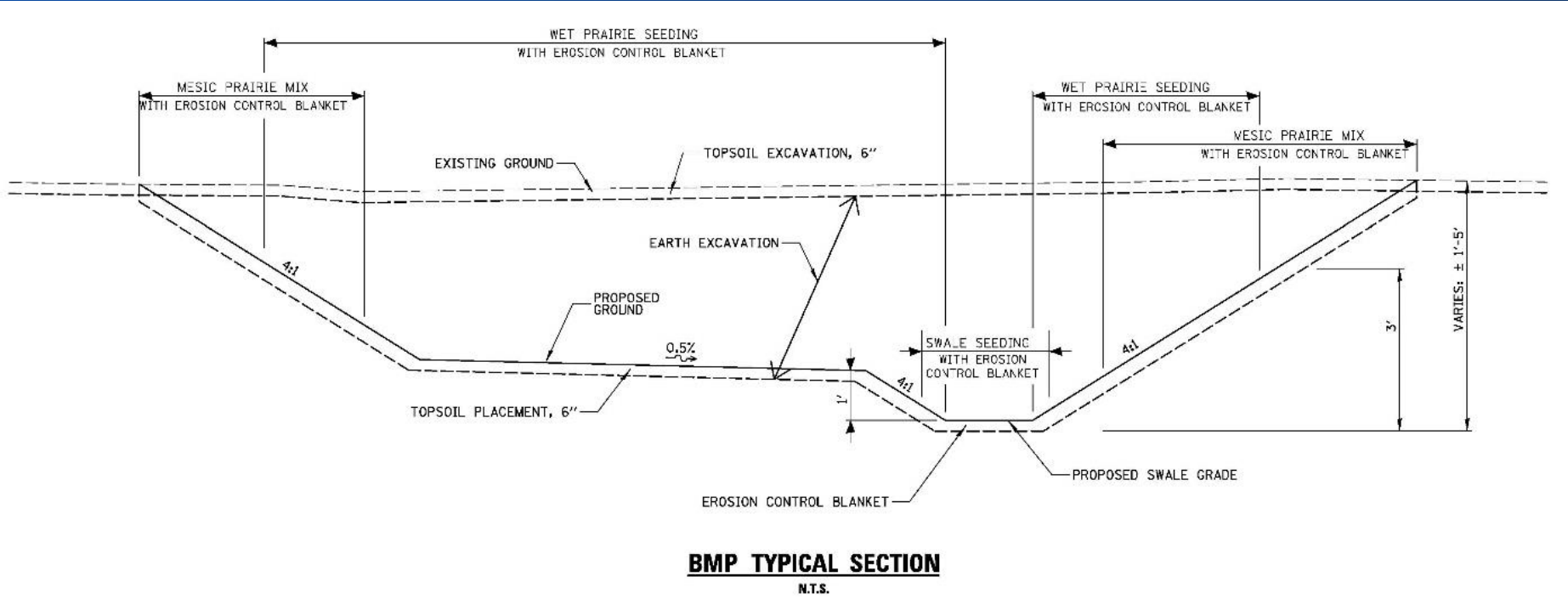
Proposed Storm Sewer & Detention Project

- **Main conveyance will be City funded/owned/maintained**
(storm sewers down street, stubs for laterals, connection to old storm sewer, outlet pipes to lake)
- **Detention/BMP basins will be City funded/owned/maintained**
(similar vegetation to East St. swale, City will treat for mosquitos)
- **Connections on private property will be homeowners responsibility to install/ fund and maintain (standard City policy). City will “stub” and cap pipes to property lines, provide grades, etc.)**



Stormwater Solutions & Stakeholder Engagement

Proposed Storm Sewer & Detention Project



(vegetation similar to the East St. swale)



CITY OF
Crystal Lake
ILLINOIS

Stormwater Solutions & Stakeholder Engagement

Status: 4 Major Steps in Project

Milestone	% Complete	Status
Property Acquisition	95%	Approved by City Council 1 parcel and 3 easements remaining
US Army Corps of Engineers Permit	100% ✓	Permit granted
Engineering	95%	Finalize after tonight's meeting
Funding	100% ✓	Included in City Council approved budget



Stormwater Solutions & Stakeholder Engagement

Status: TENTATIVE SCHEDULE

Item	Schedule
Property Acquisition	In Progress
Utility Coordination	In Progress (need to resolve Nicor conflicts)
Bidding/Contract Award	Late Summer 2019
Construction	Late Summer through Fall (Spring 2020 restoration)



Stormwater Solutions & Stakeholder Engagement

Sump Pump/Yard Drain Connections

1 connection per house in front yard. Can drain overland into grate or direct connect underground.

Must have an “air gap” between house and drain pipe.

Break – Out Sessions Next

- East Street – Rooms P 105/P-106
- Greenfield Ave – Rooms P 105/P 106
- Crystal Beach (Council Chambers)



Stormwater Solutions & Stakeholder Engagement

STOP FLOODING YOUR NEIGHBORS!

(It's also Illegal!)

- Sumps pumps CANNOT be connected to the sanitary sewer! (free City inspection)
- Yard waste is not fill for drainage swales or detention areas! (**Free weekly pickup and twice a month on Saturdays drop off**)
- Fines apply!



CITY OF
Crystal Lake
ILLINOIS