

Final Check-In



CITY OF
Crystal Lake
ILLINOIS

Country Club Study Areas 2/22/2018

Stormwater Solutions & Stakeholder Engagement

Stormwater Solutions & Stakeholder Engagement

Final Check-In

- Prioritization of Projects
- Proposed Near, Mid & Long-Term Improvements
- Next Steps
- Other Efforts



CITY OF
Crystal Lake
ILLINOIS

Stormwater Solutions & Stakeholder Engagement

Prioritization of Projects

- Nine Study Areas with a Large Variety of Impacts
- Flooding, regardless of volume, impacts property owners personally



CITY OF
Crystal Lake
ILLINOIS

Stormwater Solutions & Stakeholder Engagement

Prioritization of Projects

Staff is prioritizing projects that:

- Alleviate flooding that impacts structures (homes, garages, crawl spaces, basements)
- Alleviate significant flooding from roadways that impact properties
- Provide mechanism for relief of significant flooding on properties (impassible – several feet deep)
- Some projects must be built first to allow for other projects
- Regulatory approvals take time (US Army Corps of Engineers, IDNR, EPA, etc.)



CITY OF
Crystal Lake
ILLINOIS

Stormwater Solutions & Stakeholder Engagement

Types of Projects

- Public Improvements on Public Property
(include roadway R.O.W. or easements)
- Connections from private property for private property flooding are the responsibility of the owner
- Near-term, mid-term and long-term projects



Stormwater Solutions & Stakeholder Engagement

Country Club Study Area

Proposed Near-Term Improvements

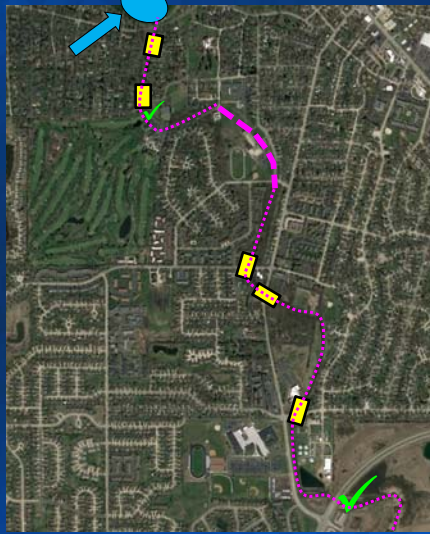
- 1. Summer 2019 Replace and Improve Crystal Creek Culverts under:**
 - Dartmoor Dr.
 - Barlina Rd.
 - McHenry Ave.
 - Broadway Ave.
 - Country Club Rd.
- 2. Initiate Crystal Lake/Crystal Creek Watershed Plan (FY 18/19)**
Required to "open up" creek and obtain IEPA Section 319 Funding – 2 Yr. Study
- 3. Initiate Lake Level Analysis (multi-year study- start FY 18/19)**



Stormwater Solutions & Stakeholder Engagement

Country Club Study Area Proposed Near-Term Improvements

- **2019 Construct Culverts**
- **Initiate Crystal Lake/ Crystal Creek Watershed Plan**
- **Initiate Lake Level Analysis**



CITY OF
Crystal Lake
ILLINOIS

Stormwater Solutions & Stakeholder Engagement

Country Club Study Area Proposed Mid to Long Term Improvements

1. Opening of Crystal Creek
2. **Broadway Storm Sewer Storm Sewer System**

Requires Creek to be improved first

Main sewer to run along Broadway with storm sewers, ditches/culverts as required down side streets

Connections from private property low spots responsibility of owner



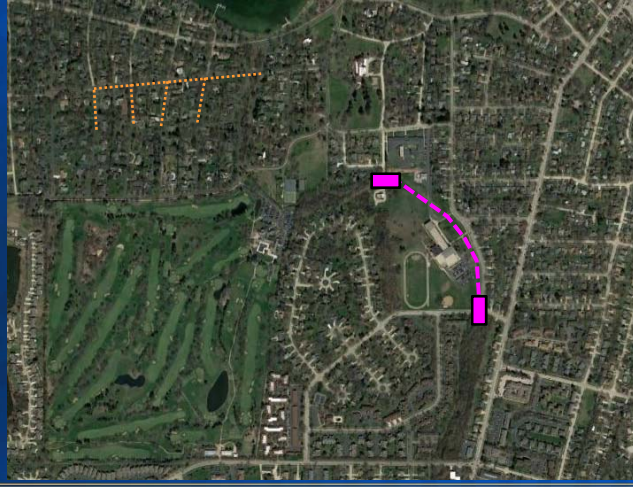
CITY OF
Crystal Lake
ILLINOIS

Stormwater Solutions & Stakeholder Engagement

Country Club Study Area: Proposed Mid & Long-Term Improvements

**Broadway Storm
Sewer System
(new CL sewer)**

**Crystal Creek
Construction**



CITY OF
Crystal Lake
ILLINOIS

Stormwater Solutions & Stakeholder Engagement

Country Club Study Area: Proposed Near-Term Improvements

- **Crystal Creek Construction**

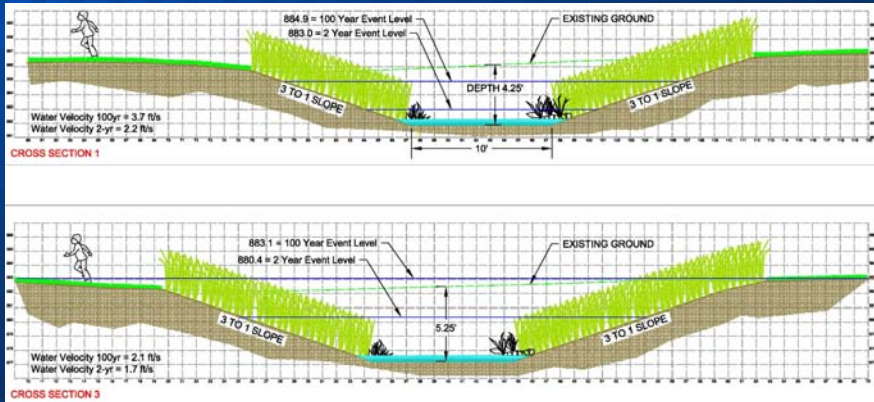


CITY OF
Crystal Lake
ILLINOIS

Stormwater Solutions & Stakeholder Engagement

Country Club Study Area: Proposed Near-Term Improvements

- Crystal Creek Construction



Stormwater Solutions & Stakeholder Engagement

CONSENSUS?



Stormwater Solutions & Stakeholder Engagement

Next Steps



- Prioritize Projects (impacts and implementation schedule)
- Distribute to City Council
- City budget approval (Fiscal Year starts 5/1/2018)
- Enhanced permitting requirements (Spring 2018)



Stormwater Solutions & Stakeholder Engagement

Sanitary Sewer Improvements

- Lining and Grouting (multi-year effort)



Stormwater Solutions & Stakeholder Engagement

Sanitary Sewer Improvements

- Overhead Sewer Program (7 left)



Stormwater Solutions & Stakeholder Engagement

Sanitary Sewer Improvements

- Overhead Sewer Program (7 left)



Stormwater Solutions & Stakeholder Engagement

Sanitary Sewer Improvements

- Overhead Sewer Program (7 left)



Stormwater Solutions & Stakeholder Engagement

Sanitary Sewer Improvements

- Overhead Sewer Program (7 left)



Stormwater Solutions & Stakeholder Engagement

Other Efforts

- Enhancements to permit process (Spring 2018)
- Review of historical data & aerials



CITY OF
Crystal Lake
ILLINOIS