



CITY OF  
*Crystal Lake*  
ILLINOIS

## Lake Street Beach Association Meeting No. 2 Stormwater Solutions & Stakeholder Engagement

### Stormwater Solutions & Stakeholder Engagement

#### Agenda

- Last Meeting: Many Questions
- Woodland Drive & Green Oaks Meeting Briefing
- Staff Initiatives & Next Steps
- North Shore Meeting 9/21



CITY OF  
*Crystal Lake*  
ILLINOIS

## Stormwater Solutions & Stakeholder Engagement

### Update on Questions

- When was the “creek” filled in?
- What was the scope of the 1999 Cove Pond Project?
- When was the lake spillway put in?
- How is the City dealing with vacant/ foreclosed homes?
- Sanitary Sewer Update (service lines, lining)?



CITY OF  
*Crystal Lake*  
ILLINOIS

## Stormwater Solutions & Stakeholder Engagement

### Update on Questions

- When was the “creek” filled in?

The outlet pipe from Cove Pond to the Lake was constructed around 1968 (design plans dated 1968).

“Dog Lake” and Cove Pond do not appear on 1962 aerials. Woodland Drive and the channel does. None of these features show in the 1953 aerial.



CITY OF  
*Crystal Lake*  
ILLINOIS

## Stormwater Solutions & Stakeholder Engagement

### Update on Questions

- What was the scope of the 1999 Cove Pond Project?

The 1999 Cove Pond Project added storage and improved water quality by decreasing the depth of the pond, but spreading it out over a wider area to improve water quality.

- What is the capacity today?

Good question! We need to find out.



CITY OF  
*Crystal Lake*  
ILLINOIS

## Stormwater Solutions & Stakeholder Engagement

### Update on Questions

- When was the lake spillway put in?



FIGURE 8  
CRYSTAL LAKE DAM AND SPILLWAY

#### DAM

The original dam across the southeast corner of the lake was constructed prior to 1915. This was

a masonry dam and was maintained by the Knickerbocker Ice Company. The top elevation was approximately 889 feet above sea level. The present concrete structure was built in 1921 (Fig. 8). The crest elevation is 890.81 feet above mean sea level, the length is 24 feet, and the spillway discharges through a 2.5 by 3 foot concrete culvert under Lake Avenue.

#### URBAN DEVELOPMENT

The City of Crystal Lake, adjacent to the lake on the east, and the Village of Lakewood, bordering the lake on the south, cover approximately 1.2 square miles of the watershed of the lake. Suburban residential development, adjacent to the north and west shores of the lake, covers another 0.7 square miles of the lake's watershed. The remaining 2.9 square miles of the watershed is in general farm land.

The population of the City of Crystal Lake and the Village of Lakewood is estimated at approximately 6660. The suburban population is estimated at approximately 1450. Most of this suburban development has occurred since about 1945.

Source: Sasman, Robert T., "The Water Level Problem at Crystal Lake, McHenry County", Illinois State Water Survey, Report of Investigation 32, Illinois State Water Survey, Department of Registration and Education, State of Illinois, 1957.



CITY OF  
*Crystal Lake*  
ILLINOIS

## Stormwater Solutions & Stakeholder Engagement

### Update on Questions

- **How is the City dealing with vacant/ foreclosed homes?**

Properties are inspected, owners researched and violations notices issued. **Aside from lawn maintenance issues, banks cannot proceed with repairs until the foreclosure is final and they take possession.** Violations issued to the owner during this period can be voided by the judicial process. As soon as the bank/new owner takes possession, enforcement actions cannot be voided.



CITY OF  
*Crystal Lake*  
ILLINOIS

## Stormwater Solutions & Stakeholder Engagement

### Update on Questions

- **Sanitary Sewer Update (service lines, lining)?**

The sewer east of Oak Ct. to the lift station has been lined.

The sanitary sewer main is 10-12 feet deep along North Shore in the vicinity of Oak Ct./ East St.

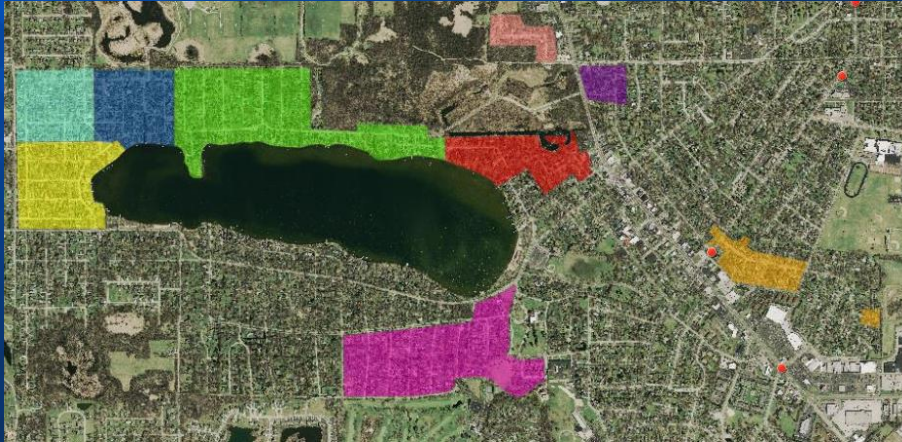
Public Works staff is identifying manholes and sewer lines for lining and grouting in next year's budget (FY starts May 2018) as well as investigating other improvements.



CITY OF  
*Crystal Lake*  
ILLINOIS

# Stormwater Solutions & Stakeholder Engagement

## Woodland Dr./ Green Oaks Meetings



CITY OF  
*Crystal Lake*  
ILLINOIS

# Stormwater Solutions & Stakeholder Engagement

## Staff Initiatives

10 stakeholder meetings since 7/24

4 remaining

**Next Steps:**  
Research  
Analysis  
Concepts  
Cost Estimates  
Presentation  
Report



CITY OF  
*Crystal Lake*  
ILLINOIS

[License](#) | [News](#) | [Employment](#) | [Download Documents](#) | [Contact Us](#)

Search...

[HOME](#) | [ABOUT US](#) | [RESIDENTS](#) | [BUSINESSES](#) | [VISITORS](#) | [DEPARTMENTS](#) | [I WANT TO...](#)

### Stormwater Solutions

- Study Areas
- Attend a Meeting
- FAQs
- Resources
- Storm Relief Efforts
- Citizen Support Center
- Three Oaks Recreation Area
- Resident Information
- Property Taxes
- Education
- Library
- Transportation
- Interactive Maps
- Downtown/ Commuter Parking
- Freedom of Information Act
- Economic Development
- Tree Preservation

### Residents

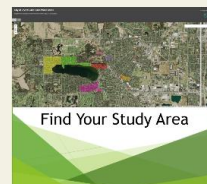
### Stormwater Solutions

Font Size: [A](#) [A](#) [A](#) | [Share & Bookmark](#) | [Feedback](#) | [Print](#)

#### Overall Updates:

9/1/17 Watershed Permits Process Enhancements – Many of the residents during the Open Houses voiced concerns about allowing additional home improvements or new homes in their neighborhoods. The concern being that additional impervious coverage appears to exacerbate the flooding that the existing homes experience during severe rain events. Staff has researched City ordinances and is identifying ways to improve current permit practices and engineering requirements. In addition, staff is researching how other communities with established neighborhoods built without stormwater conveyance systems permit additional impervious area.

Please check back often as the webpages are continually updated.



CITY OF  
*Crystal Lake*  
ILLINOIS

## Stormwater Solutions & Stakeholder Engagement

### North Shore Meeting 9/21

All groups/ associations invited

Updates on process and schedule

Present general concepts for future projects

### November Presentation/ Meeting(s)

### Finalize December



CITY OF  
*Crystal Lake*  
ILLINOIS

## Stormwater Solutions & Stakeholder Engagement

### Questions?

Mike Magnuson, PE  
Director of Public Works  
815-356-3611

[mmagnuson@crystallake.org](mailto:mmagnuson@crystallake.org)



CITY OF  
*Crystal Lake*  
ILLINOIS

# Stormwater Solutions & Stakeholder Engagement



CITY OF  
*Crystal Lake*  
ILLINOIS